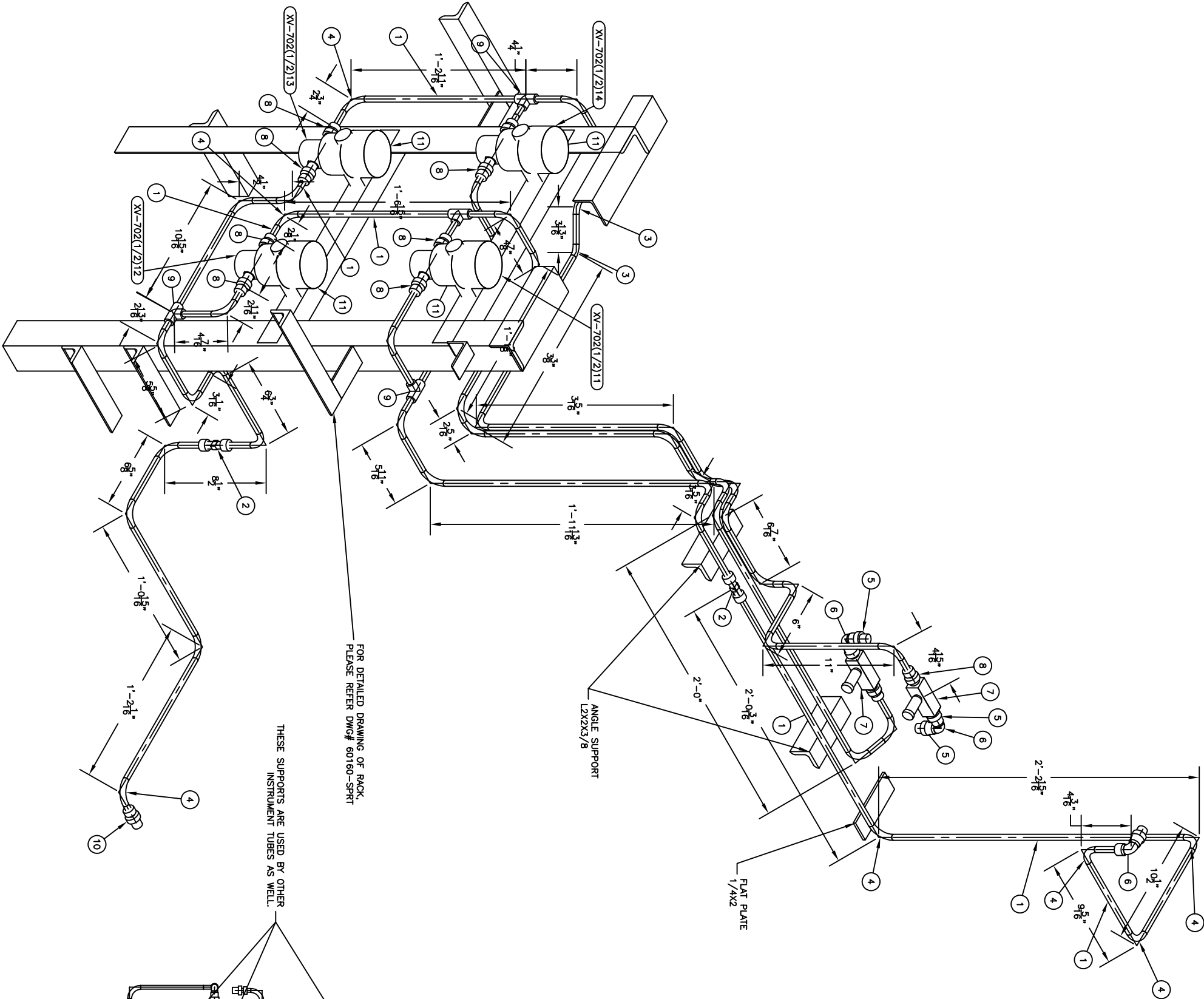
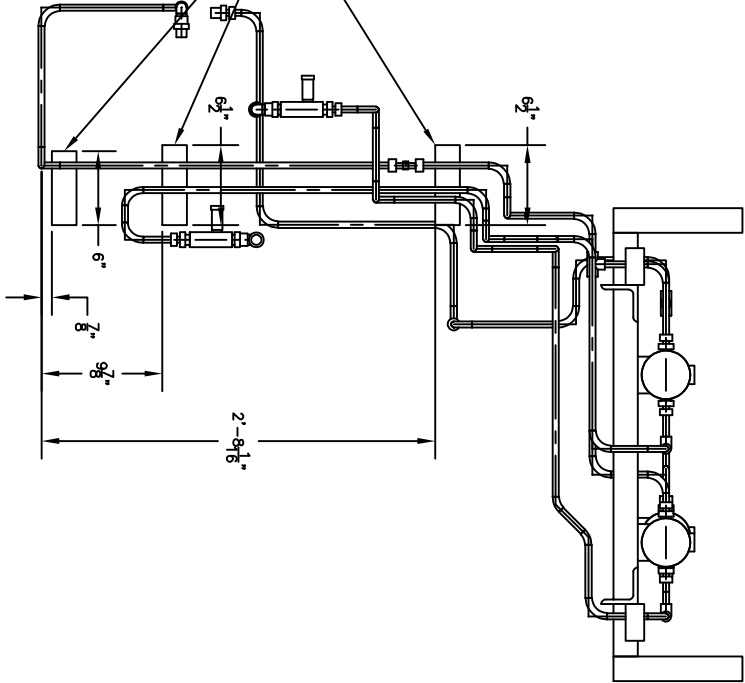


BILL OF MATERIALS			
ID	QTY	NO	DESCRIPTION
PIPE			
1	33'-6 1/2"	1/2"	TUBING, ASTM A269, SEAMLESS - 316SS
FITTINGS			
2	2	1/2"xundefine d Size	Union, Tubing, 316SS, Tube x Tube
3	2	1/2"	BEND 45 SR, TUBING, ASTM A269, 316SS
4	45	1/2"	BEND 90 SR, TUBING, ASTM A269, 316SS
5	5	1/2"	MaleStub 1/2Rc(M) x 1/2"Tube
6	3	1/2"	Union Elbow 1/2" T x 1/2" T
7	2	1/2"	FCV 1/2" NPT(F) x 1/2" NPT(F)
8	10		MaleConnector 3/8" RC(BSPF) x 1/2"Tube
9	4	1/2"	Union Tee 1/2" Tube x 1/2" Tube x 1/2" Tube
10	1	3/4"x1/2"	Male Connector 3/4" NPT x 1/2" T
VALVES			
11	4		SOLENOID VALVE 3/8" RC (BSPF)



FOR DETAILED DRAWING OF RACK,
PLEASE REFER DWG# 60160-SPRT

THESE SUPPORTS ARE USED BY OTHER
INSTRUMENT TUBES AS WELL.



002	F	14.10.24	FOR APPROVAL	AJD	AJD	IES	SES		
001	F	26.02.24	FOR APPROVAL	AJD	AJD	IES	SES		
000	F	16.10.23	FOR APPROVAL	AJD	AJD	IES	SES		
REV.	DATE	STATUS	PURPOSE OF ISSUE	PREP	CHKD.	APPD.	AUTH.		
			DELTA DELTA-MME-2023-XXX-XX PROPYLENE REF. PACKAGE RU-7001 IRAO5						
Version 1.000									
Contract No.	Proj No.	DELTA-MME-2023-XXX-XX							
DRAWING TITLE: SLIDE VALVE ASSEMBLY HOOKUP DIAGRAM									
DRAWING NO	MPE-005-60160			REV.	SHEET No.		SIZE		
CLIENT NO: 7021				2	1 OF 1		D		